



Using the LANGuardian Configuration Wizard

01 February 2012

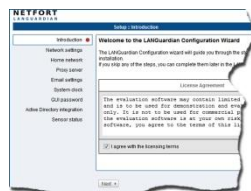
This document describes how to use the Configuration Wizard when you install LANGuardian.

After you install LANGuardian from the ISO image or deploy the LANGuardian VMware appliance, the home page of the browser-based user interface is available at the IP address you specified during the installation. You must use the HTTPS protocol. For example, if the IP address you specified during the installation is 192.168.10.200, the address of your LANGuardian home page will be `https://192.168.10.200`.

The first time you visit the home page after installation, LANGuardian will display the Configuration Wizard. Follow the steps to complete the installation. The steps are as follows:

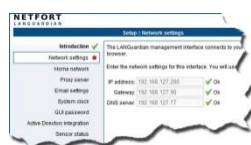
The steps are as follows:

1. Accept the license agreement



You must accept the license agreement to complete the configuration

2. Verify the network settings



Verify the network settings that you entered when booting the ISO image or deploying the VMware appliance.

3. Specify the Home network



In large networks, the Home network setting specifies the subnet in which the LANGuardian system is located. Do not change this setting unless you know what you are doing.

4. Specify a proxy server for LANGuardian updates



LANGuardian connects to the Internet to keep itself up to date by downloading updates from the NetFort Technologies website. If your network provides access to the Internet through a proxy server, enter the address and port number.

5. Specify the SMTP server to use for email



LANGuardian uses email to send scheduled reports to users and issue alerts when specified incidents occur or thresholds are breached. Enter the address of the SMTP server that LANGuardian uses to send email.

6. Set the system clock



You can set the LANGuardian system clock manually or you can synchronize it automatically with a reference clock on the Internet.

7. Set the GUI password



Set the password that you will use to log on to the LANGuardian user interface.

8. Specify Active Directory details



If you plan to integrate LANGuardian with Windows Active Directory, enter the details here.

9. Review sensor status



Review the sensor status to make sure LANGuardian is connected to your network and is sniffing traffic.

Click **Finish** to complete the configuration. LANGuardian will display the main dashboard page.

After you complete the wizard steps, LANGuardian will display the home page. It comes pre-configured with a number of standard dashboards and reports, which you can use as-is or customize according to your requirements. LANGuardian begins monitoring your network immediately after installation, so you should see traffic data appearing in the reports within a few minutes. Please contact us if you encounter any problems when installing or configuring LANGuardian.

Need help?

Please contact us if you need help installing or configuring NetFort LANGuardian. You can avail of free no-obligation technical support by contacting our helpdesk on support@netfort.com. See also the NetFort discussion forum – <http://forum.netfort.com> – for technical tips and usage information.