

LANGuardian Excel Integration

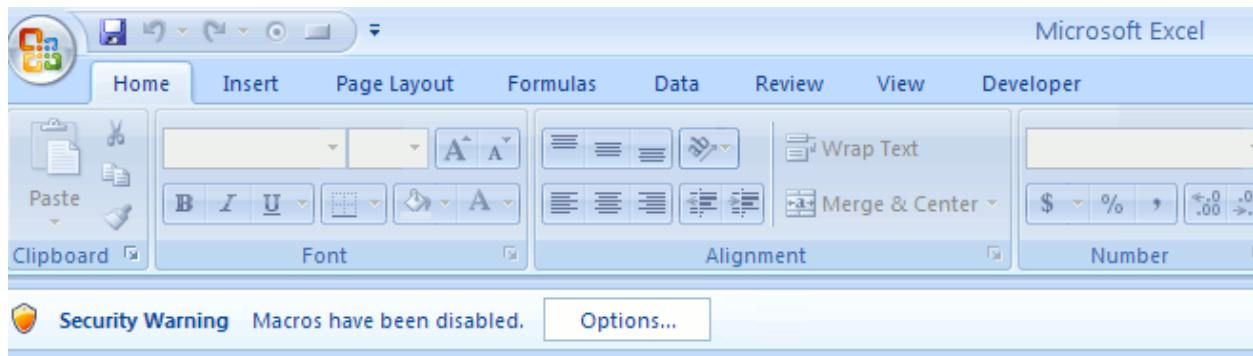
The LANGuardian Excel Integration pack is delivered in the form of a compressed folder called **LANGuardian Excel Integration.zip**

Download this file on to your host and decompress the file. It will extract as a folder called LANGuardian Excel Integration which will contain 2 files

- NetFort setup - Excel spreadsheet which needs to be opened to install Excel plugin
- NetFort LANGuardian – a plugin which will be added to Excel and allows access to the LANGuardian integration icon

To install the LANGuardian Excel plugin open the Excel spreadsheet NetFort setup and you will need to complete the following fields

Please note at this point you may need to enable Macros in Excel, if Macros are disabled then the install script will not work. For Excel 2007 the following message will be displayed:



B1

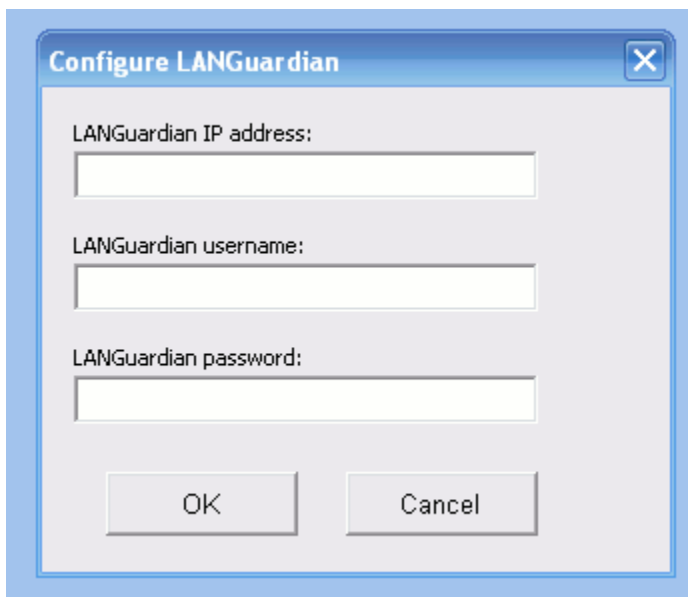
Click options and select that you want to allow this content. Once you allow macros the following screen will be displayed



The options are to:

- Install the LANGuardian Add-In
- Uninstall the LANGuardian Add-in

Click Continue to complete the first step

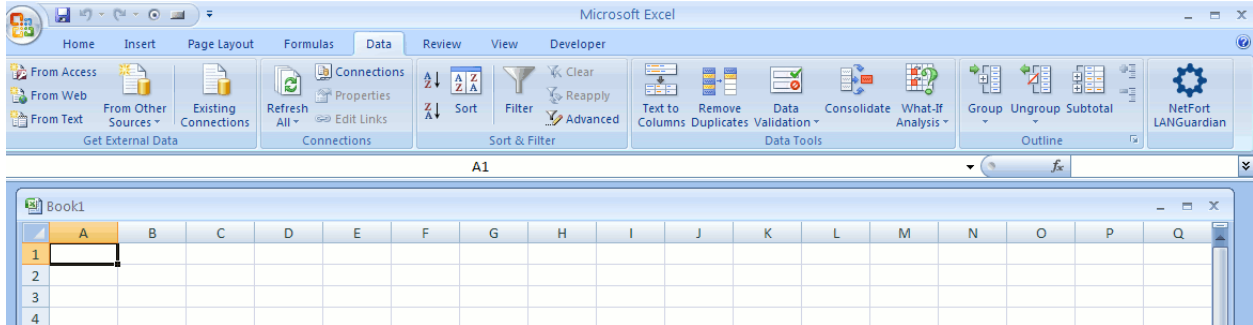


At this point in the process enter

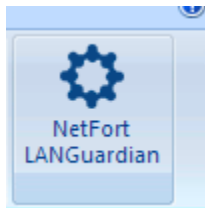
- LANGuardian IP address – IP address of the LANGuardian unit
- LANGuardian username – Username for access to LANGuardian GUI
- LANGuardian password – Password for access to LANGuardian GUI

These values will be retained and used during the generation of reports from Excel. Click OK to progress the install. Close down the Excel sheet to complete the process.

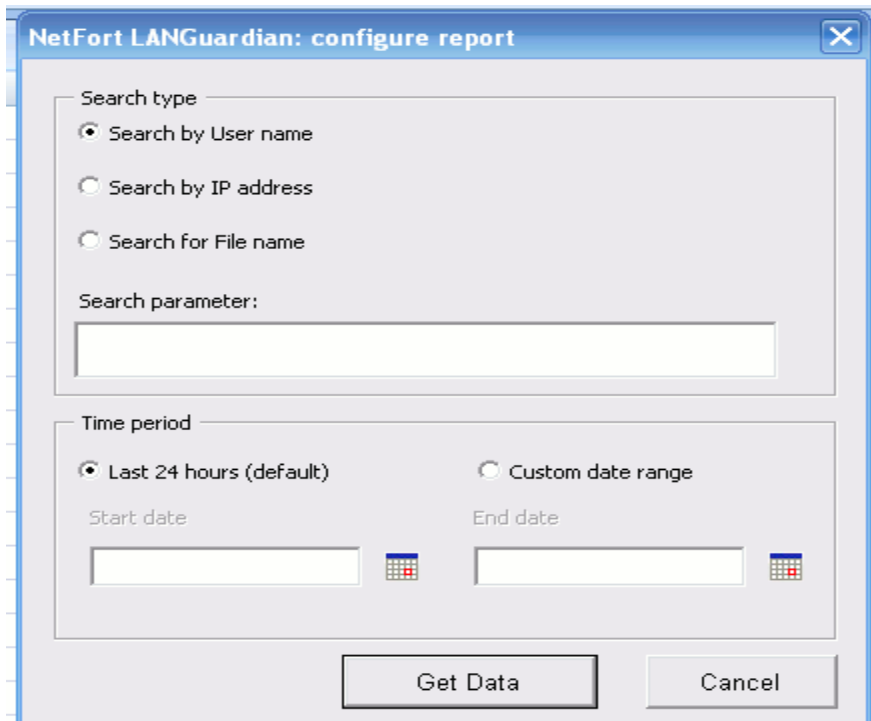
Open a new Excel sheet and then click the **Data** tab.



A new link to the LANGuardian plugin has been added.



In order to run the LANGuardian integration simply click on the button and the following input screen will be presented.



You can run a report

- Search by User name – Search for a users Web activity for a specified time frame
- Search by IP address – Search for an IP addresses activity for a specified time frame
- Search for File name – Search for accesses to a specific file for a specified time frame

Below are sample reports

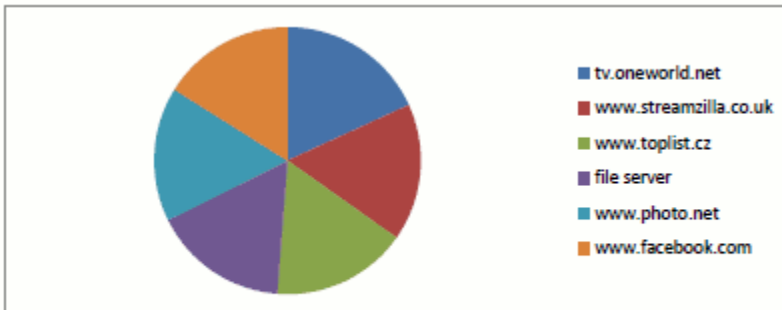
User Web Usage

This report lists the websites that have been recorded for a user wendy (Wendy Fagan)

It shows the name of the website, the time when the website was first accessed, and the time it was last accessed. The list is sorted by the number of page hits per website.

Click the Run Report button, enter the user name, and the start date and the end date for the report.

Web accesses recorded for wendy (Wendy Fagan) for the last 24 hours.



Website accessed	Time of first access	Time of last access	Total page hits
tv.oneworld.net	3/22/2010 0:27	3/23/2010 23:48	199
www.streamzilla.co.uk	3/22/2010 0:54	3/23/2010 23:53	182
www.toplist.cz	3/22/2010 0:50	3/23/2010 23:41	180
file server	3/22/2010 0:09	3/23/2010 23:39	180
www.photo.net	3/22/2010 0:10	3/23/2010 23:59	178
www.facebook.com	3/22/2010 0:05	3/23/2010 23:34	176
www.buybooks.me.uk	3/22/2010 0:03	3/23/2010 23:59	175
tracker.publicbt.com	3/22/2010 0:41	3/23/2010 23:58	173
ms-sql server	3/22/2010 0:10	3/23/2010 23:59	172
www.adultinterest.com	3/22/2010 0:16	3/23/2010 23:54	170
www.megaupload.com	3/22/2010 0:22	3/23/2010 23:33	169
www.betfair.com	3/22/2010 0:00	3/23/2010 23:47	169
finance server	3/22/2010 0:00	3/23/2010 23:53	167
www.yahoo.com	3/22/2010 0:29	3/23/2010 23:26	166
www.frebsd.org	3/22/2010 0:06	3/23/2010 23:59	164

Access to file report

This report lists the accesses that have been recorded for a file called Product_Specification.

It shows the user who accessed the file, the action they performed on the file, the file server the file was accessed on and the time when the file was accessed.

Click the Run Report button, enter the file name, and the start date and the end date for the report.

Accesses recorded for the file Product_Specification for the last 24 hours.

User name	Action	File server	Time	File accessed
Peter Erwin	File Read	192.168.0.160 (file server)	3/23/2010 18:00	\\TECHNICAL_DOCUMENTS\Product_Specification.doc
Fred Dandy	File Read	192.168.0.160 (file server)	3/23/2010 18:01	\\TECHNICAL_DOCUMENTS\Product_Specification.doc
Danny Noland	File Read	192.168.0.160 (file server)	3/23/2010 18:01	\\TECHNICAL_DOCUMENTS\Product_Specification.doc
Karen Clark	File Read	192.168.0.160 (file server)	3/23/2010 18:02	\\TECHNICAL_DOCUMENTS\Product_Specification.doc
Andrea Cron	File Read	192.168.0.160 (file server)	3/23/2010 18:02	\\TECHNICAL_DOCUMENTS\Product_Specification.doc
Bill Patton	File Read	192.168.0.160 (file server)	3/23/2010 18:03	\\TECHNICAL_DOCUMENTS\Product_Specification.doc
Bill Patton	File Write	192.168.0.160 (file server)	3/23/2010 18:03	\\TECHNICAL_DOCUMENTS\Product_Specification.doc
Wendy Fagan	File Read	192.168.0.160 (file server)	3/23/2010 18:04	\\TECHNICAL_DOCUMENTS\Product_Specification.doc
Sean Torr	File Read	192.168.0.160 (file server)	3/23/2010 18:04	\\TECHNICAL_DOCUMENTS\Product_Specification.doc
Leslie Nilsen	File Read	192.168.0.160 (file server)	3/23/2010 18:05	\\TECHNICAL_DOCUMENTS\Product_Specification.doc
Peter Erwin	File Read	192.168.0.160 (file server)	3/23/2010 18:00	\\TECHNICAL_DOCUMENTS\Product_Specification.doc
Fred Dandy	File Read	192.168.0.160 (file server)	3/23/2010 18:01	\\TECHNICAL_DOCUMENTS\Product_Specification.doc
Danny Noland	File Read	192.168.0.160 (file server)	3/23/2010 18:01	\\TECHNICAL_DOCUMENTS\Product_Specification.doc
Karen Clark	File Read	192.168.0.160 (file server)	3/23/2010 18:02	\\TECHNICAL_DOCUMENTS\Product_Specification.doc
Andrea Cron	File Read	192.168.0.160 (file server)	3/23/2010 18:02	\\TECHNICAL_DOCUMENTS\Product_Specification.doc
Bill Patton	File Read	192.168.0.160 (file server)	3/23/2010 18:03	\\TECHNICAL_DOCUMENTS\Product_Specification.doc
Bill Patton	File Write	192.168.0.160 (file server)	3/23/2010 18:03	\\TECHNICAL_DOCUMENTS\Product_Specification.doc